



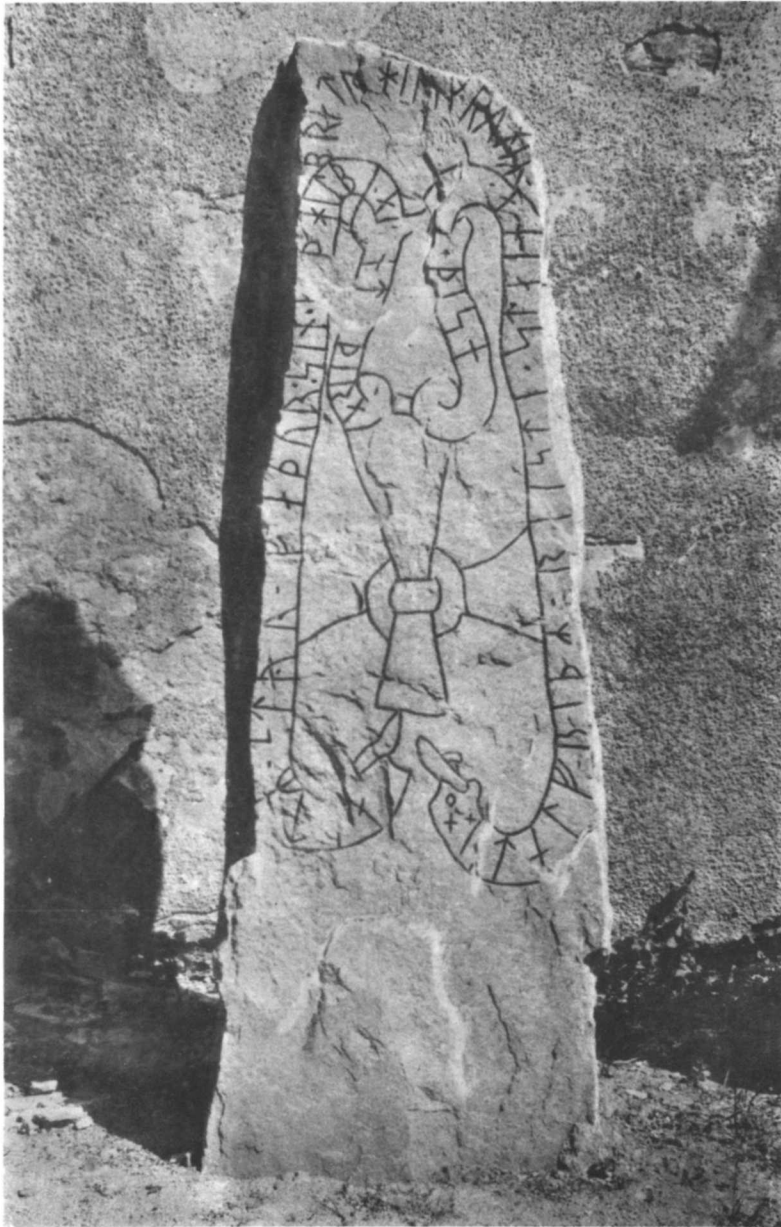
U 1062. Dalboda, Viksta sn.



U 1063. Kallslätt, Viksta sn.



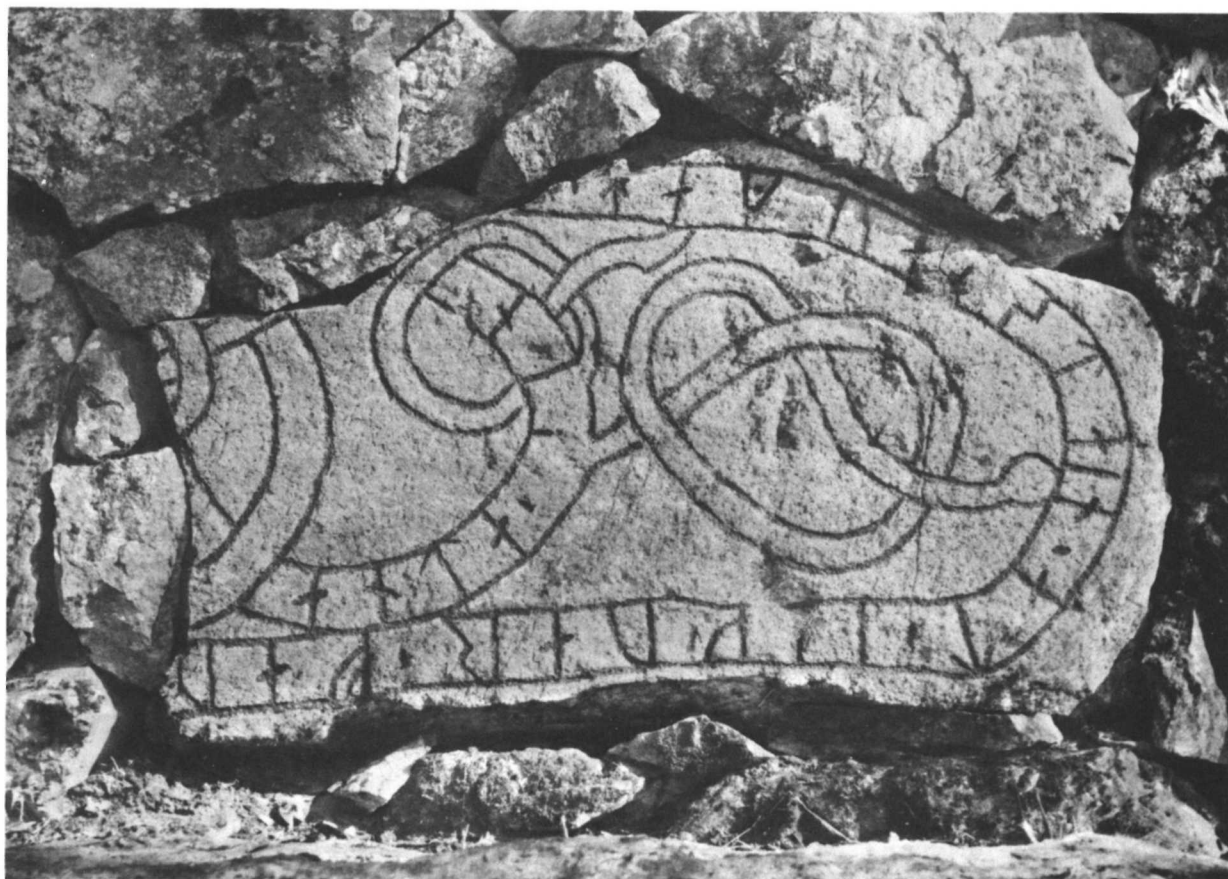
U 1067 och 1066. Åkerby kyrka.



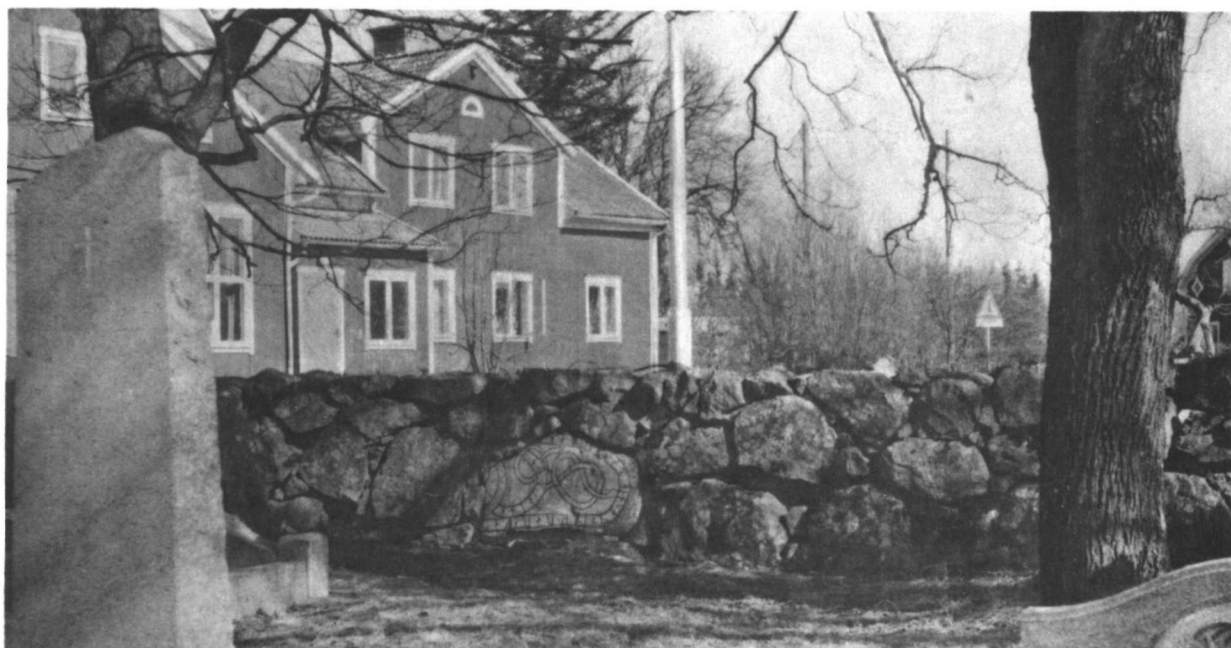
U 1067. Åkerby kyrka.



U 1066. Åkerby kyrka.



U 1068. Åkerby kyrka.



U 1068. Åkerby kyrka.



U 1069. Berga, Åkerby sn.



U 1070. Kroksta, Åkerby sn.



U 1069. Berga, Åkerby sn.



U 1070. Kroksta, Åkerby sn.



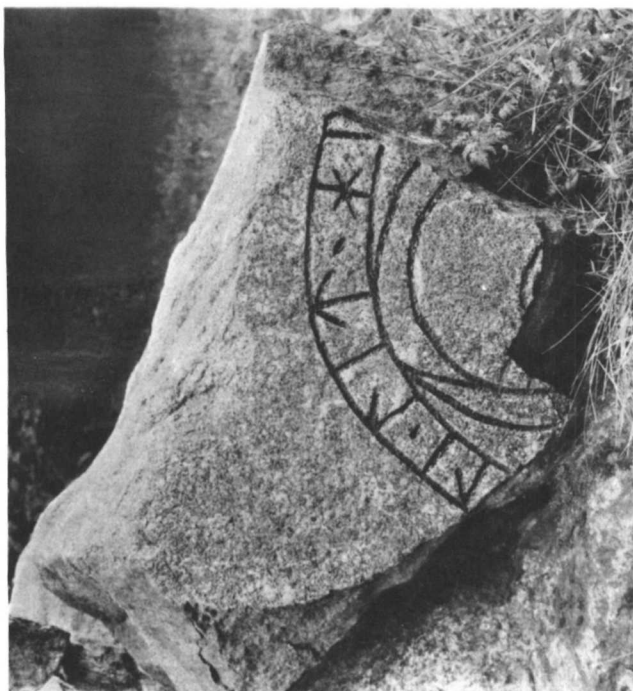
U 1071. Sylta, Söderby, Åkerby sn.



U 1072. Bälinge kyrka.
Ristningen ouppmålad.



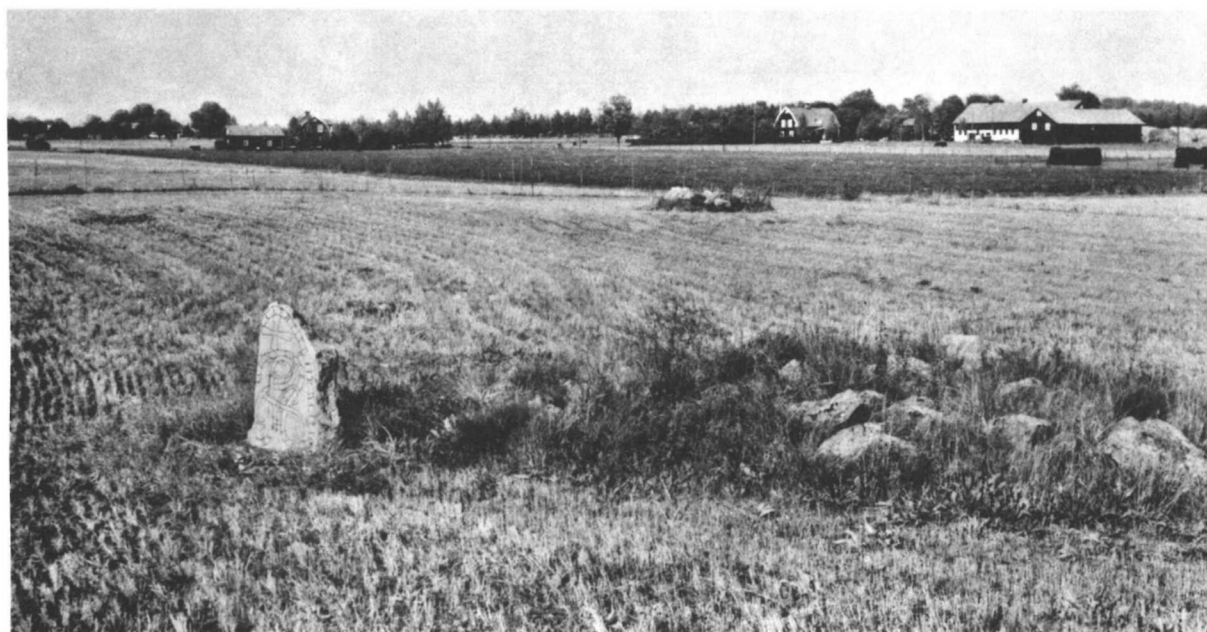
U 1072. Bälinge kyrka.



U 1079. Forkarby, Bälinge sn.



U 1080. Forkarby, Bälinge sn.
Nu vid Sundbro.



U 1081. Forkarby, Korsbacken, Bälinge sn.



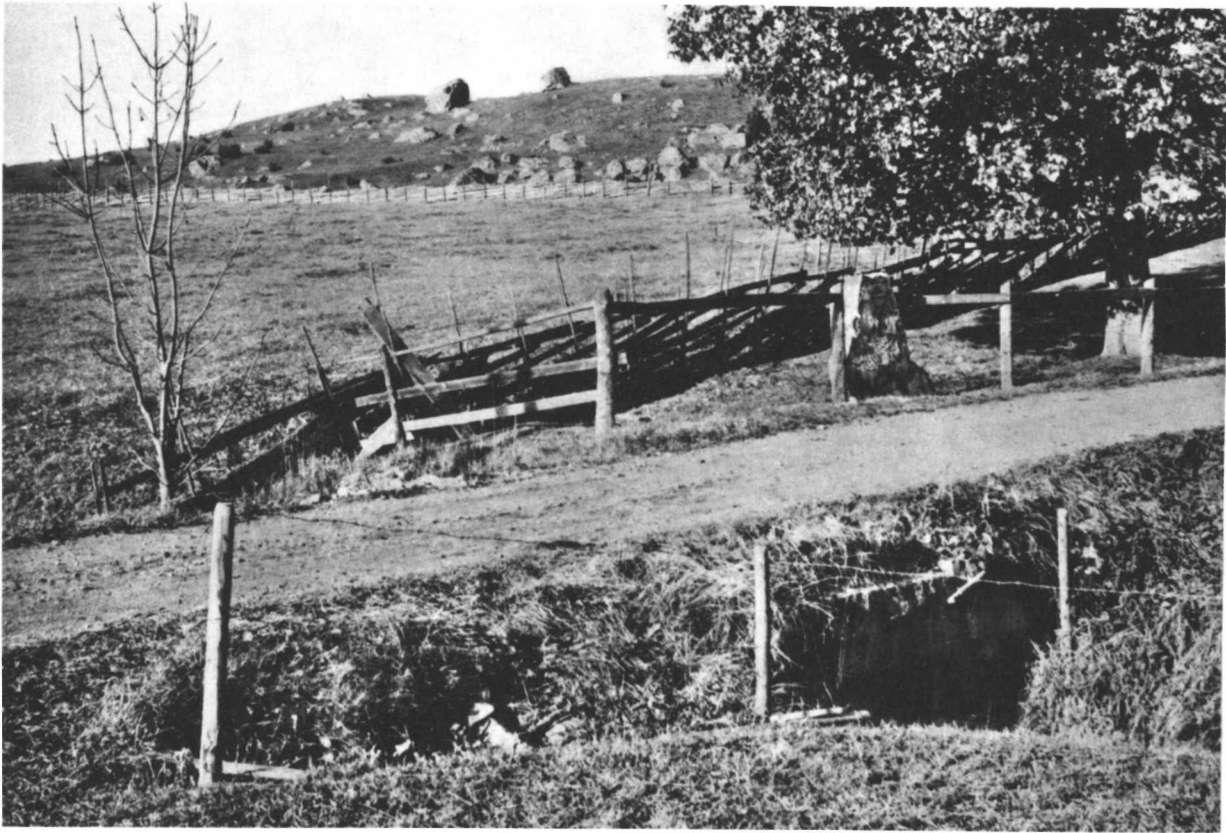
U 1084. Hämringe, Bälinge sn.



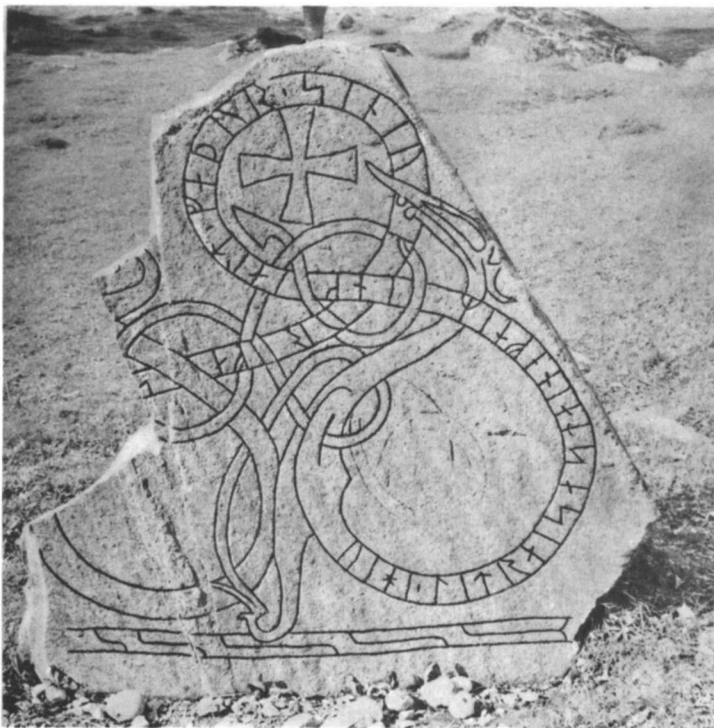
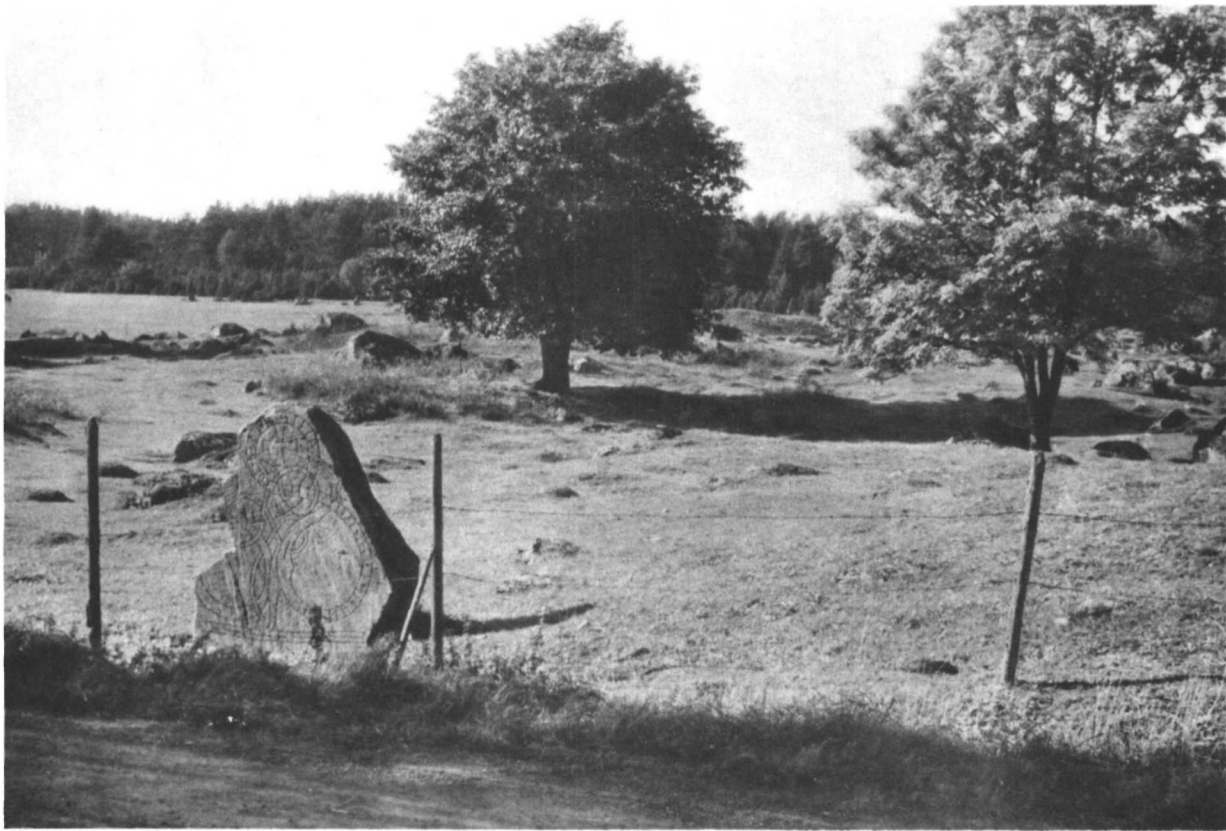
U 1081. Forkarby, Korsbacken, Bälinge su.



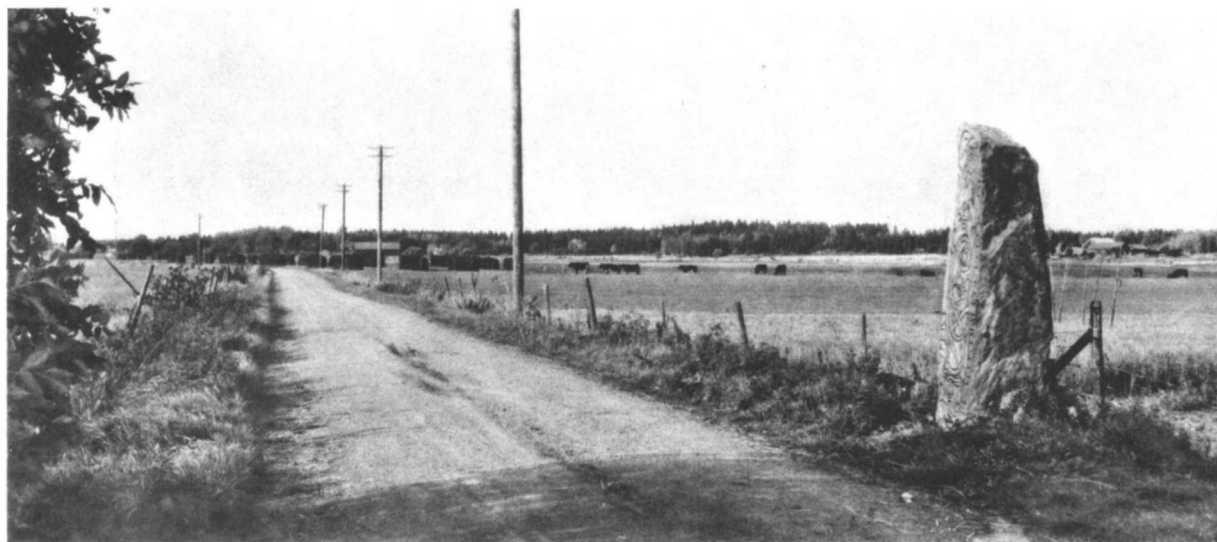
U 1084. Hämringe, Bälinge sn.



U 1085. Högsta, Bälunge sn.



U 1089. Marsta, Bälinge sn.



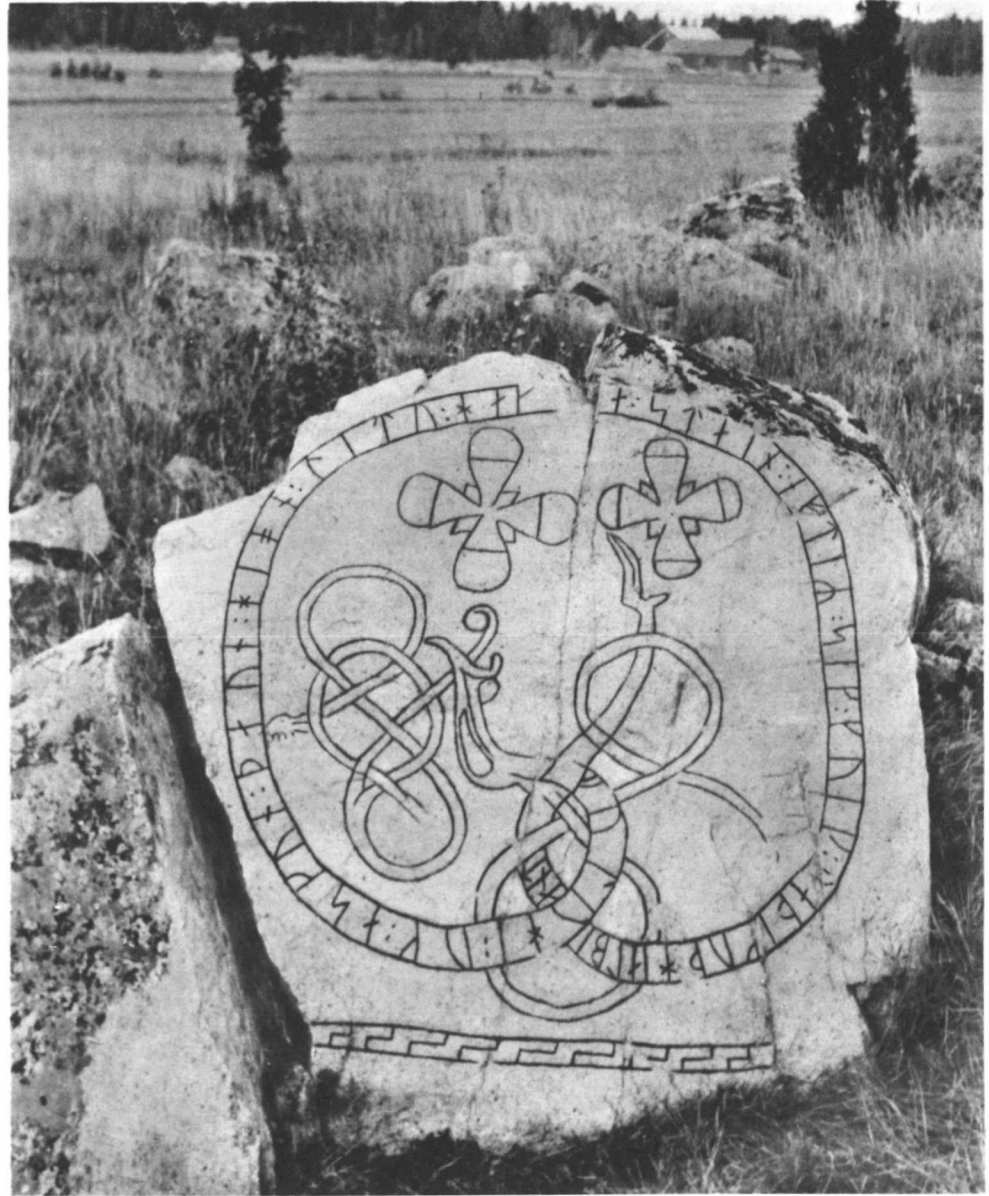
U 1092. Nyvla, Bälinge sn.



U 1093. Nyvla, Tingstukällan. Bälinge sn.



U 1092. Nyvla, Bålinge sn.



U 1093. Nyvla, Tingstukällan, Bålinge sn.



U 1095 och 1096. Rörby, Bälunge sn.



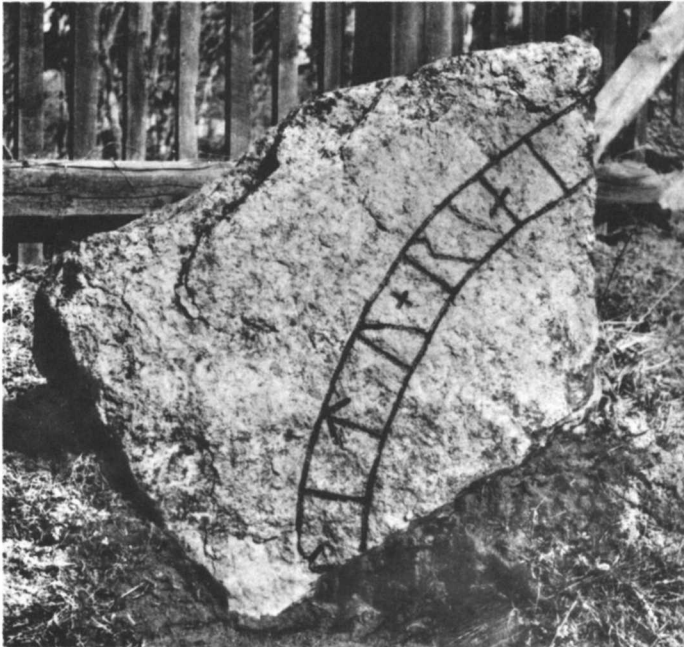
U 1095. Rörby, Bålinge sn.



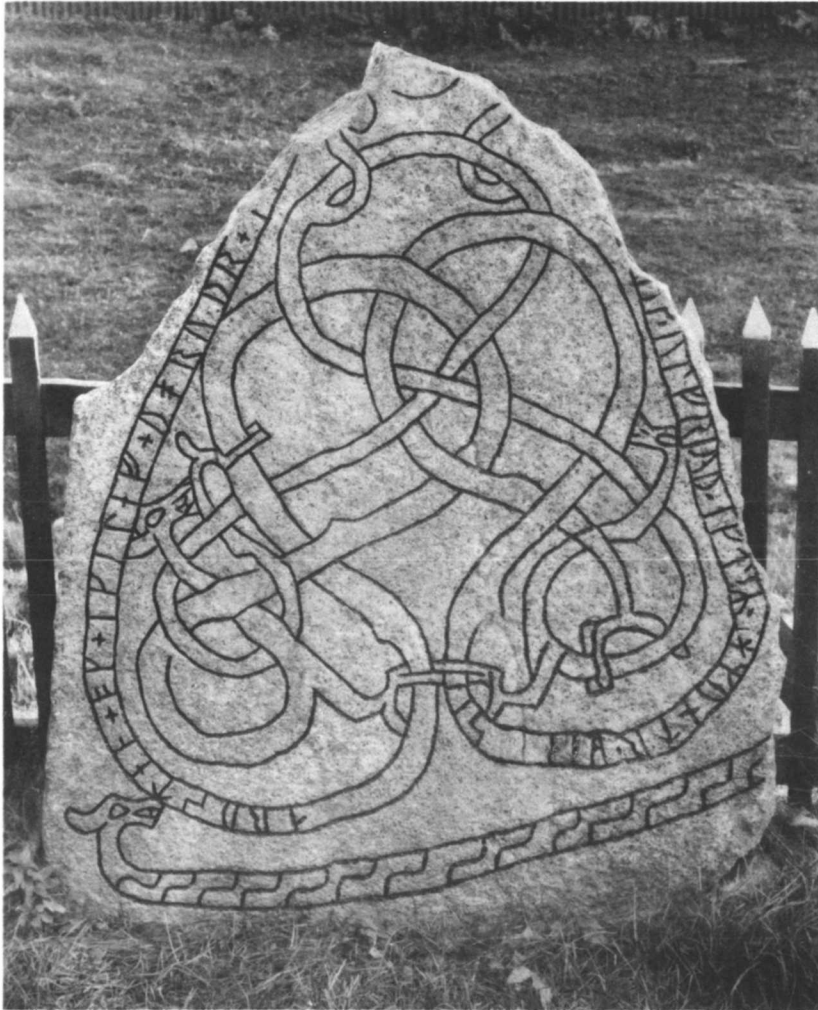
U 1096. Rörby, Bålinge sn.



Vid landsvägen genom Sundbro finnas U 1097, 1098 och 1100. U 1100 synes på vägens vänstra sida, U 1097 och 1098 längre bort i högra vägkanten.



U 1098. Sundbro, Bälinge sn.



U 1097. Sundbro, Bälinge sn.



U 1100. Sundbro, Bälinge sn.



Gammal vägbro vid Tuna, Bälinge sn. I närheten står U 1104.



U 1104. Tuna, Bälinge sn.



U 1104. Tuna, Bälunge sn.



U 1106. Äskelunda, Bälunge sn.



U 1106 och 1107. Äskelunda, Bälinge sn.



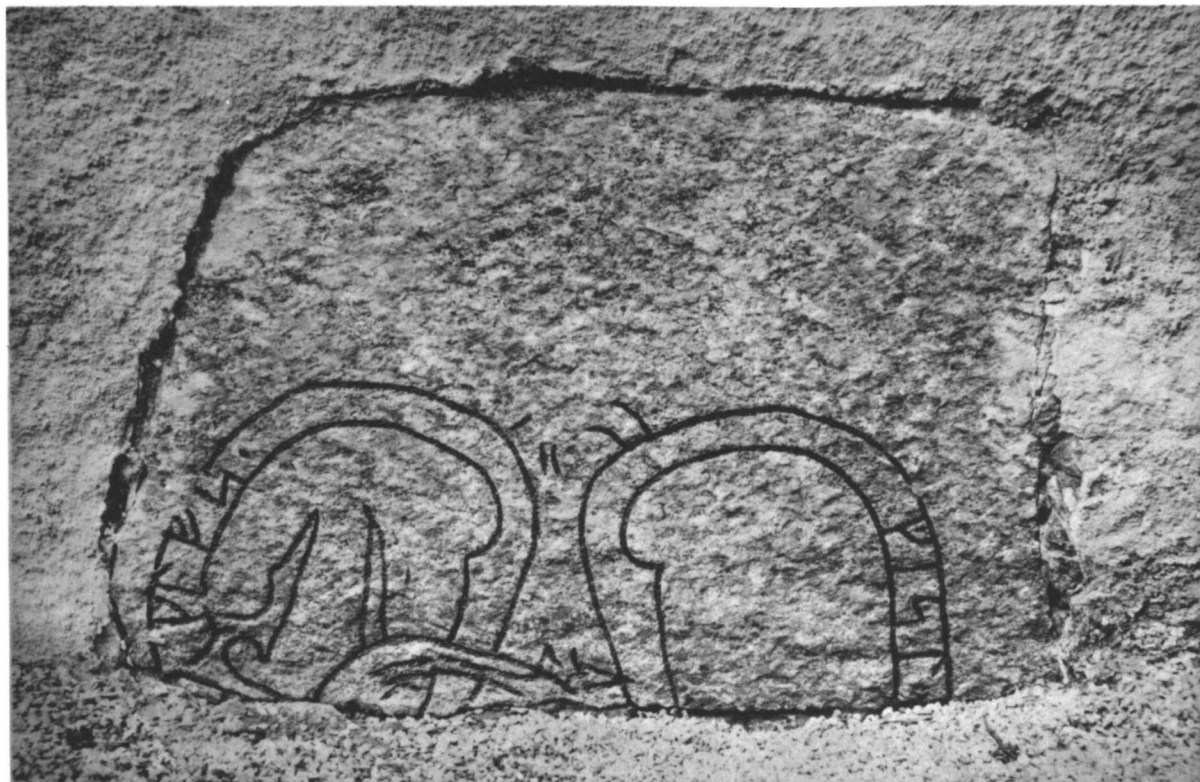
U 1107. Äskelunda, Bälinge sn.



U 1107. Äskelunda, Bälunge sn.
Ristningen ouppmälad.



U 1107. Äskelunda, Bälunge sn.



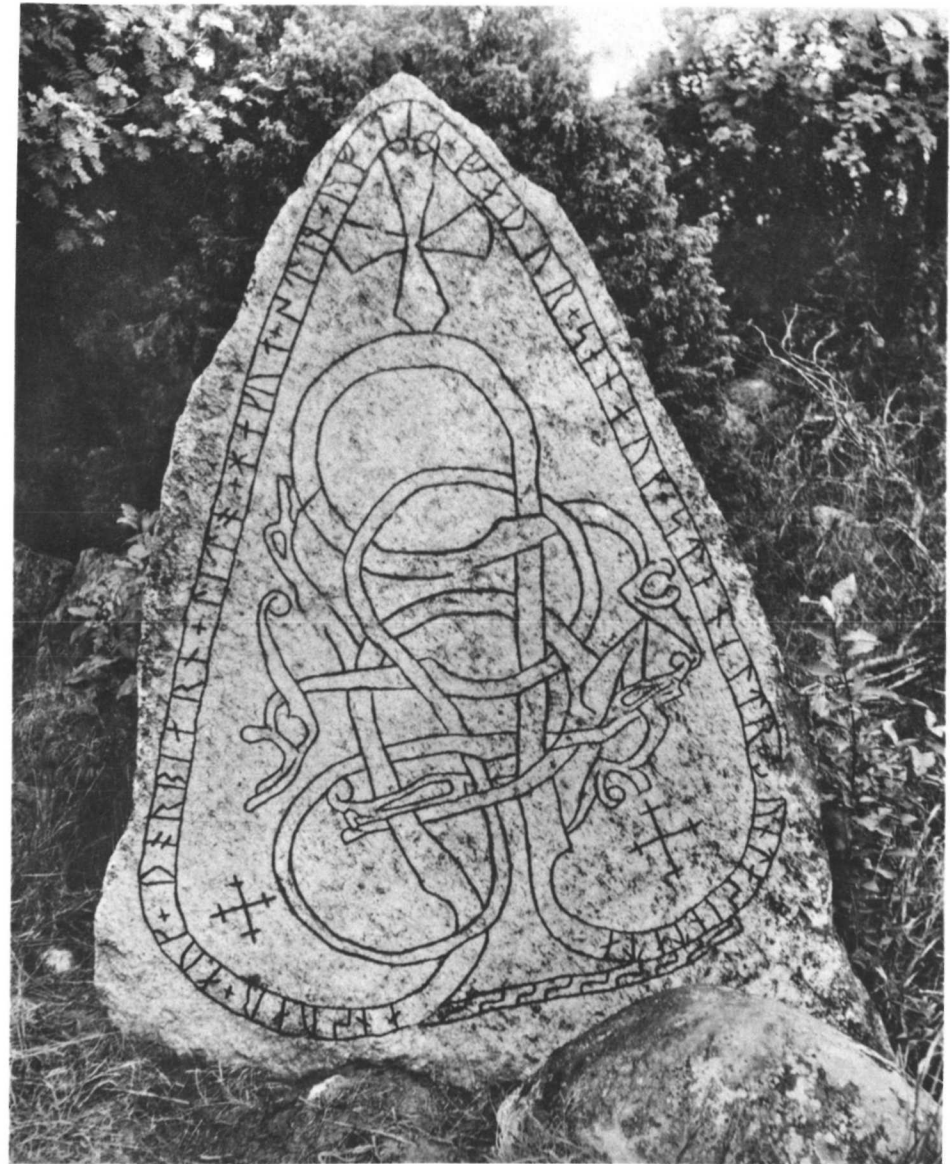
U 1109. Skuttunge kyrka.



U 1110. Broddbo, Skuttunge sn.



U 1110. Broddbo, Skuttunge sn.



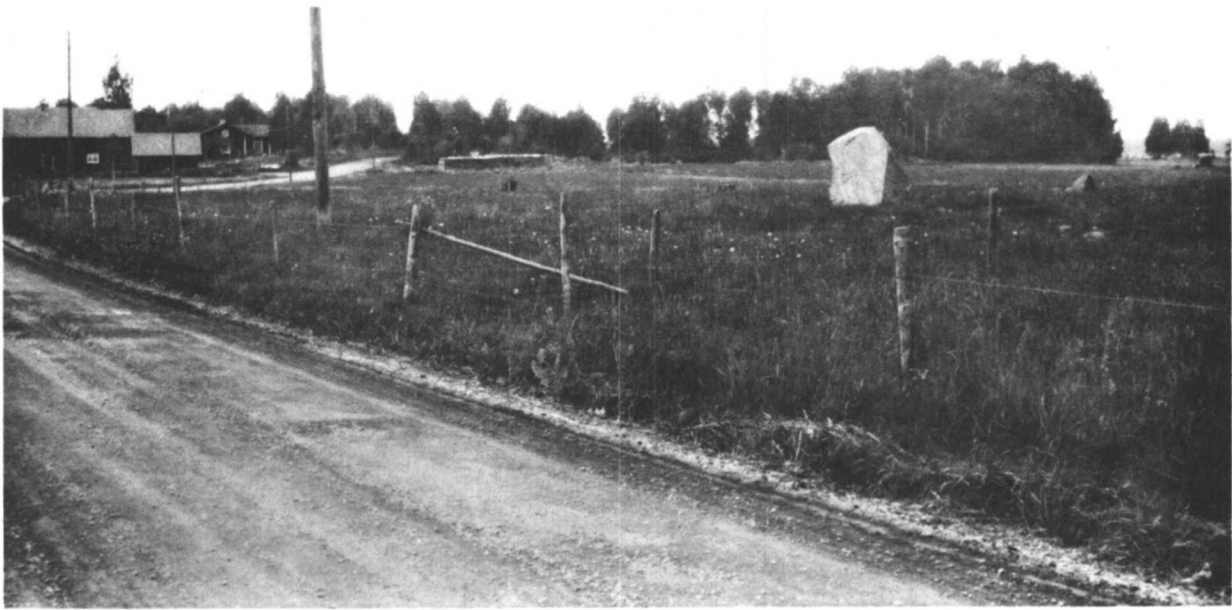
U 1111. Eke, Skuttunge sn.



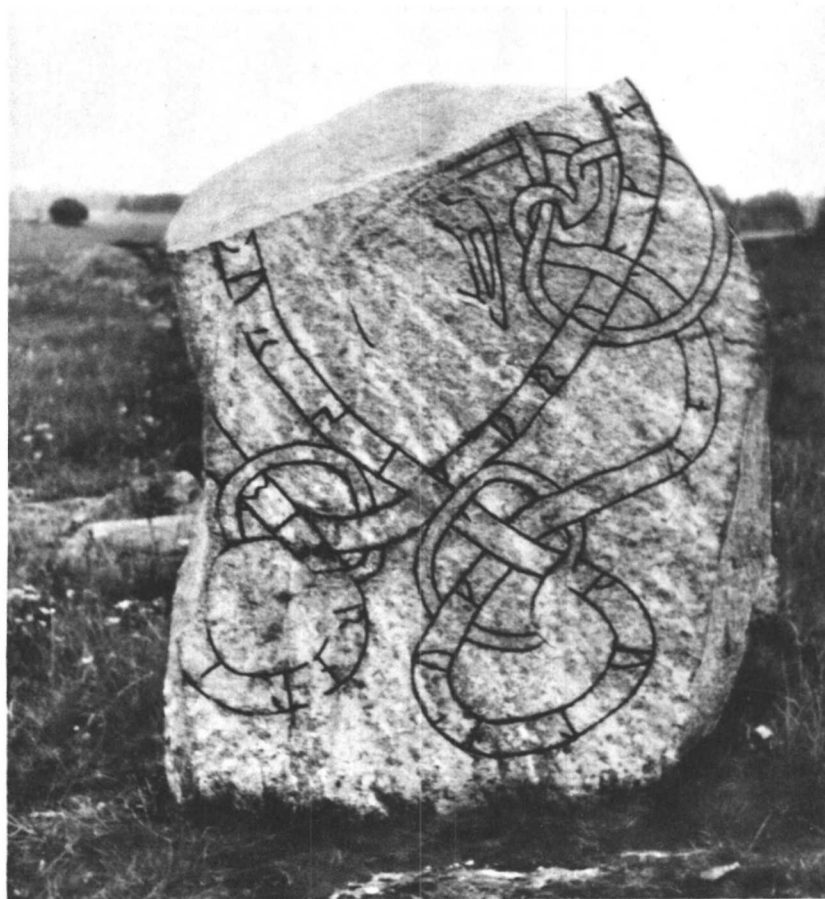
U 1111. Eke, Skuttunge sn.



U 1113. Hågeby, Skuttunge sn.



U 1117. Vigle, Skuttunge sn.



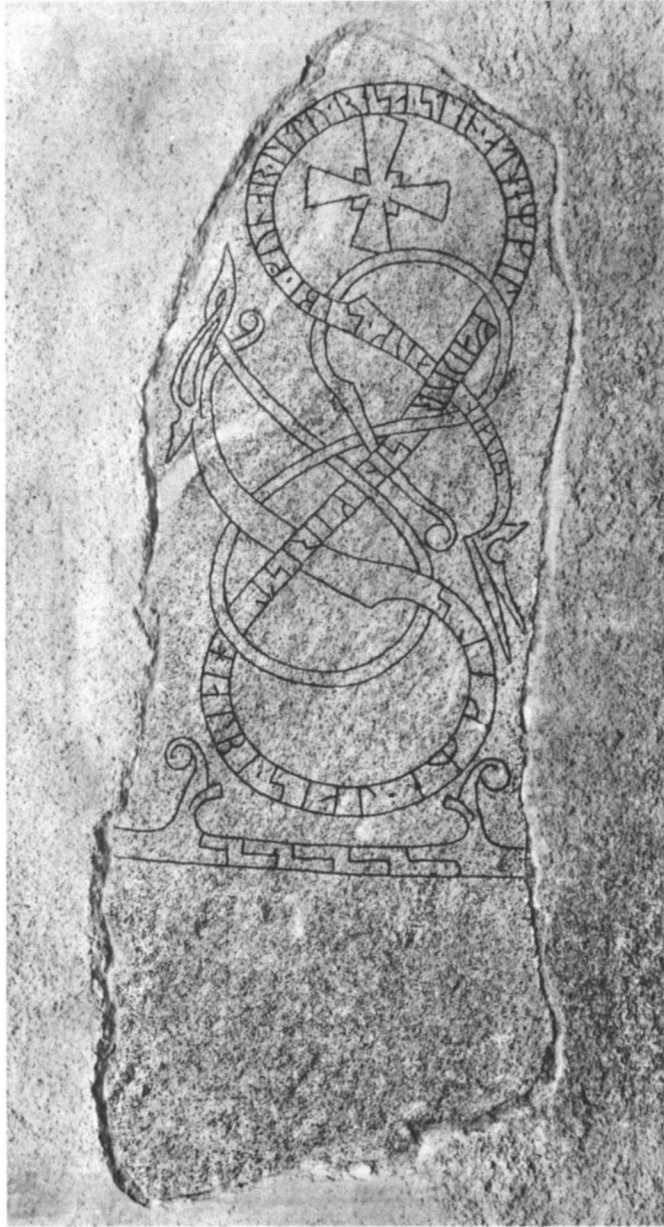
U 1117. Vigle, Skuttunge sn.



U 1118. Örke, Skuttunge sn.



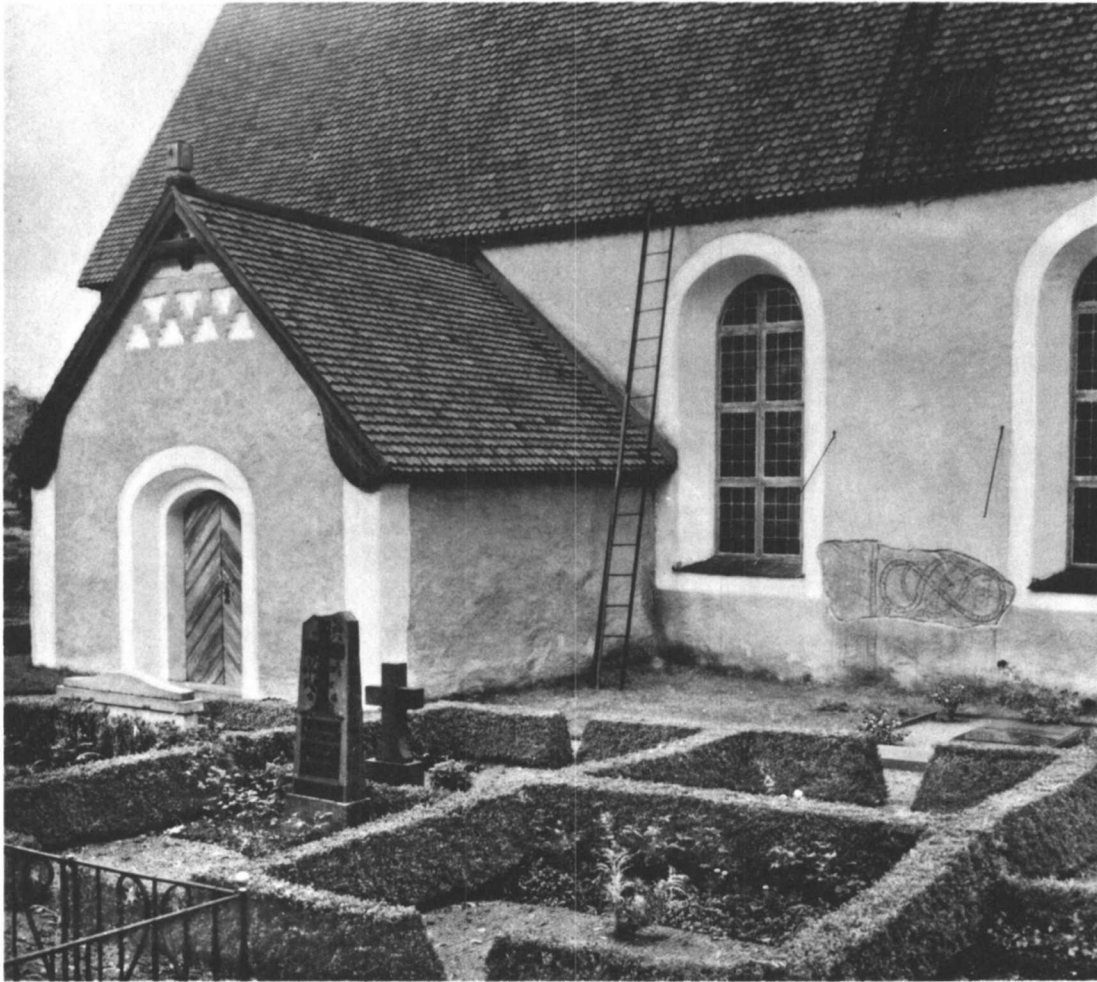
U 1119. Örke, Skuttunge sn.
Nu i Högsta bro, Bälinge sn.



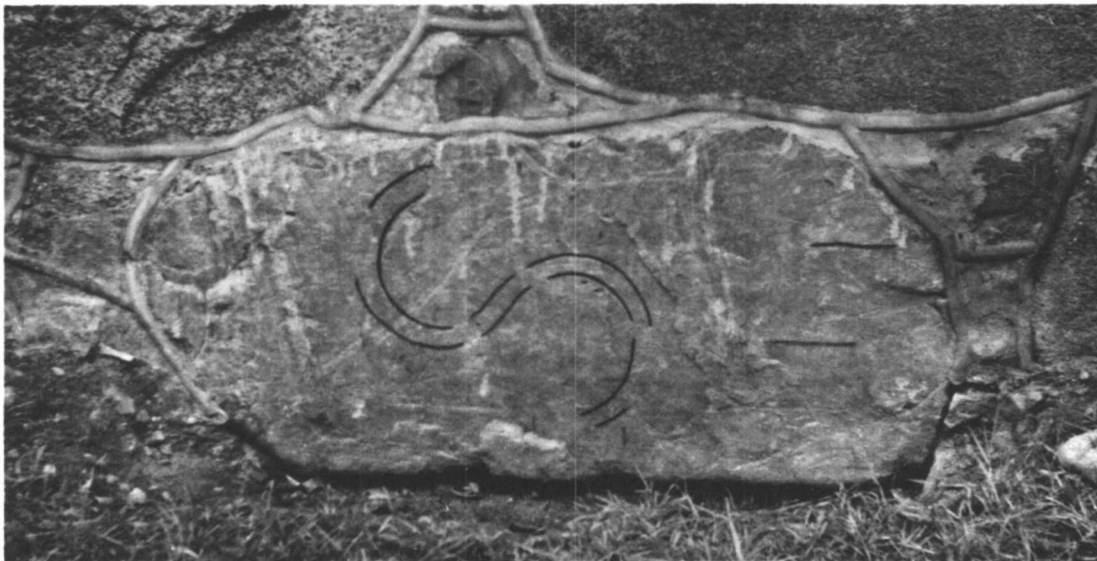
U 1122. Stavby kyrka.



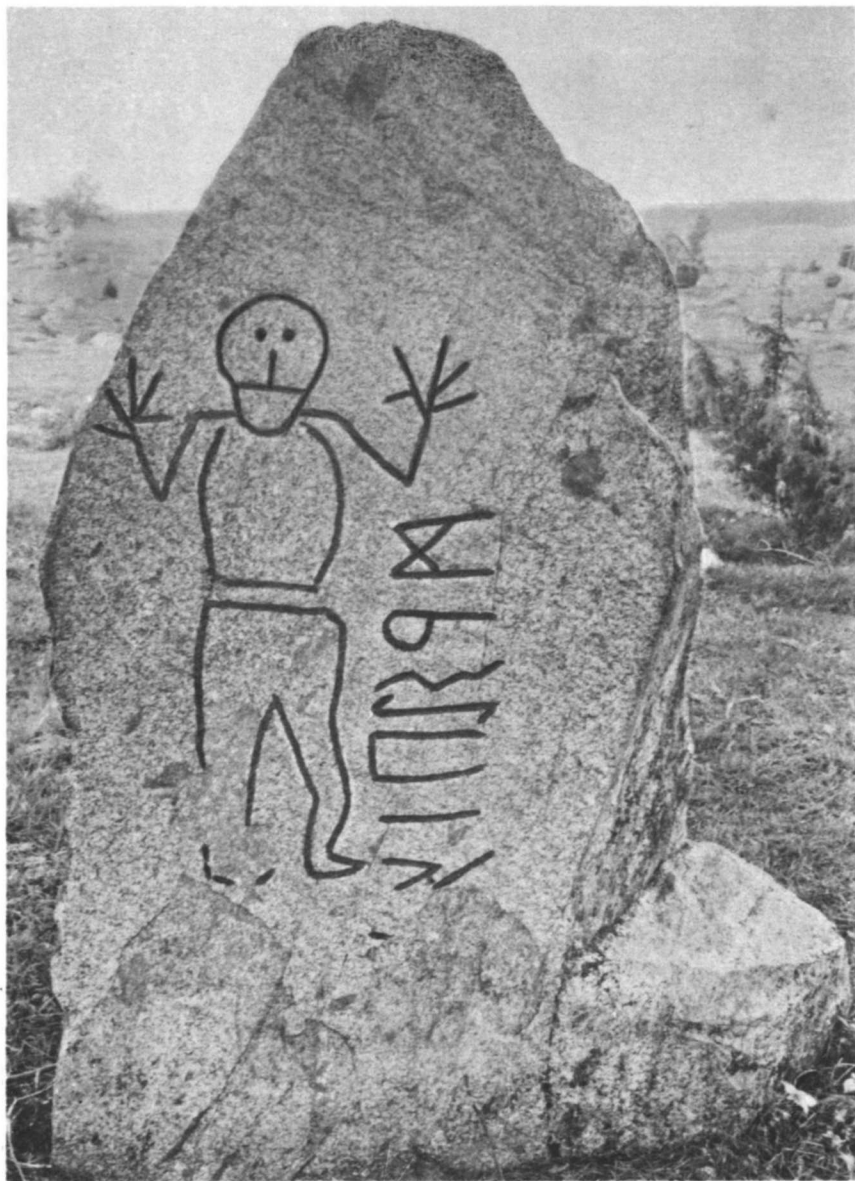
U 1123. Tuna kyrka.



U 1122. Stavby kyrka.



U 1124. Tuna kyrka.



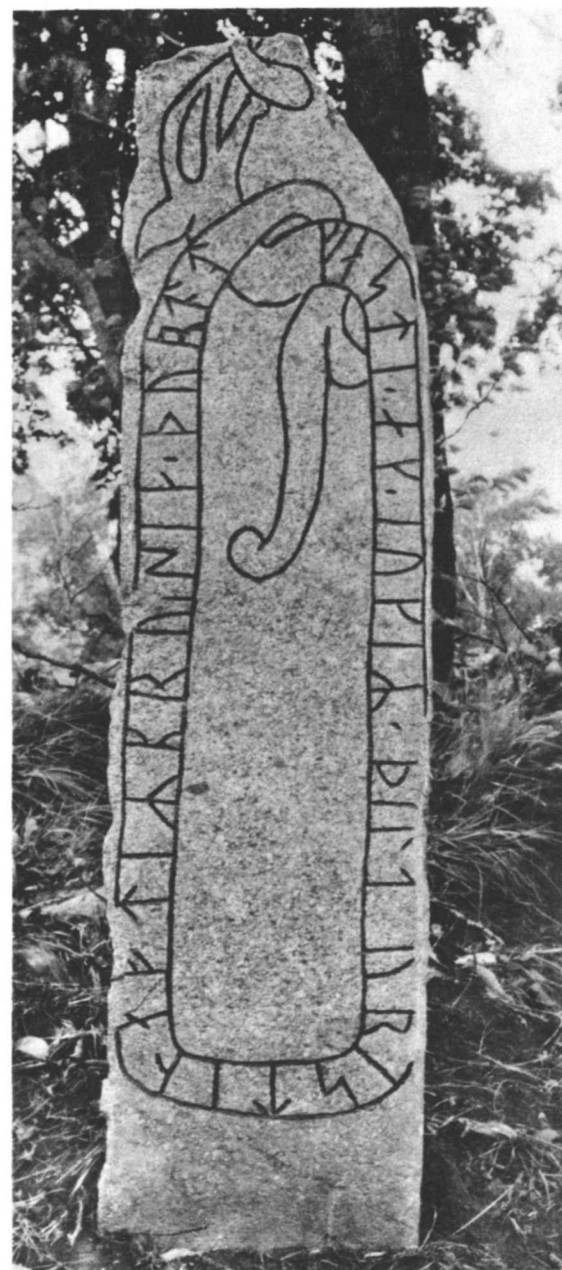
U 1125. Krogsta, Tuna sn.



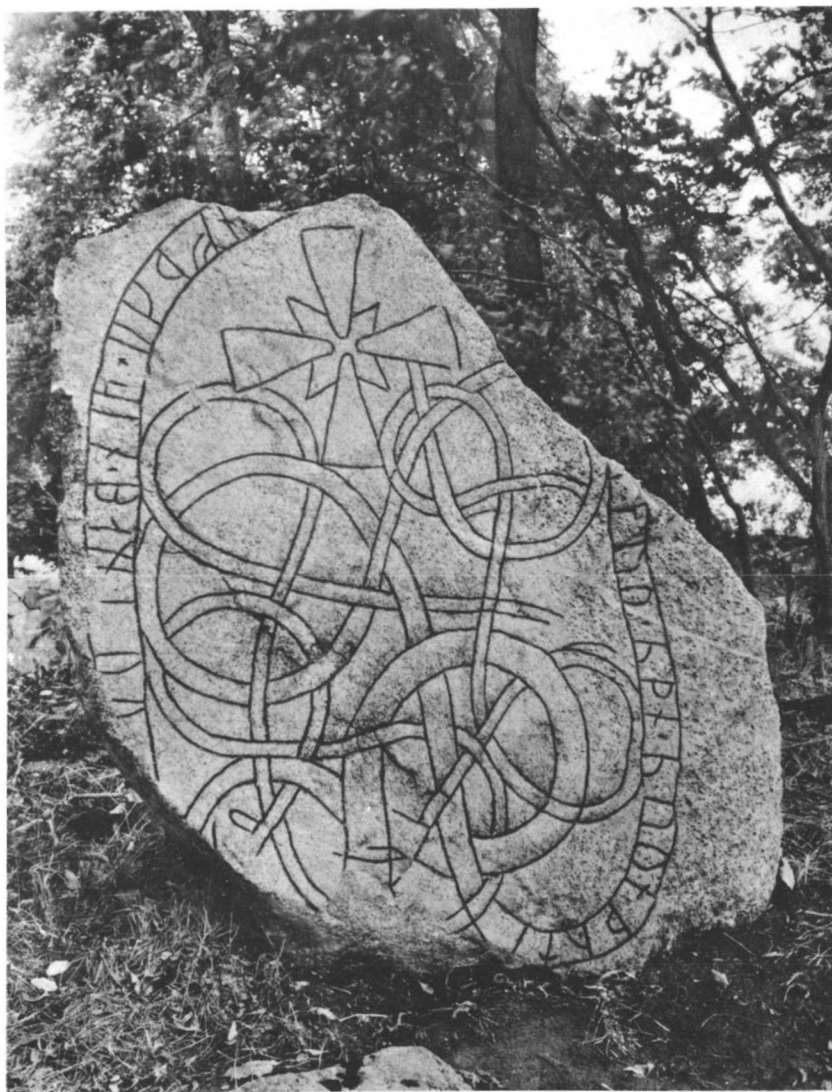
U 1125. Krogsta, Tuna sn.



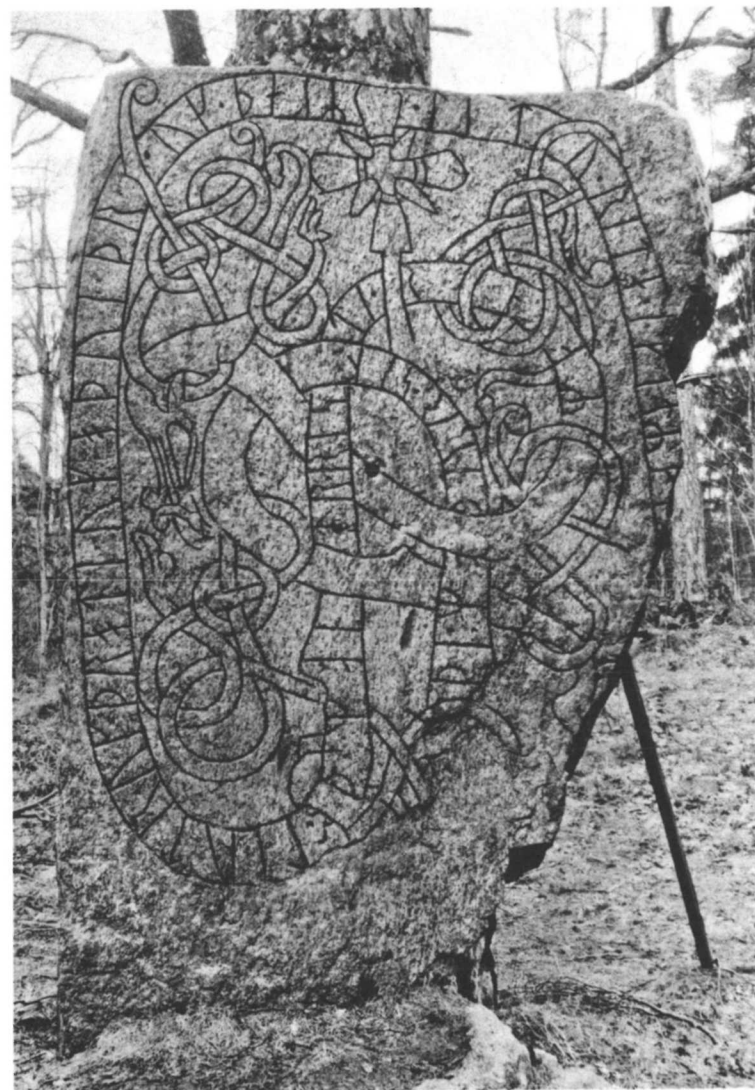
U 1126. Alunda kyrka.



U 1127. Alunda kyrka.



U 1128. Alunda kyrka.



U 1132. Gimo, Skäfthammars sn.



U 1134. Söderby, Morkarla sn.



U 1135. Ackarby, Dannemora sn.



U 1136. Gubbo, Kallviksmossen, Films sn.



U 1138. Hållen, Runhållsbacken, Hållnäs sn.



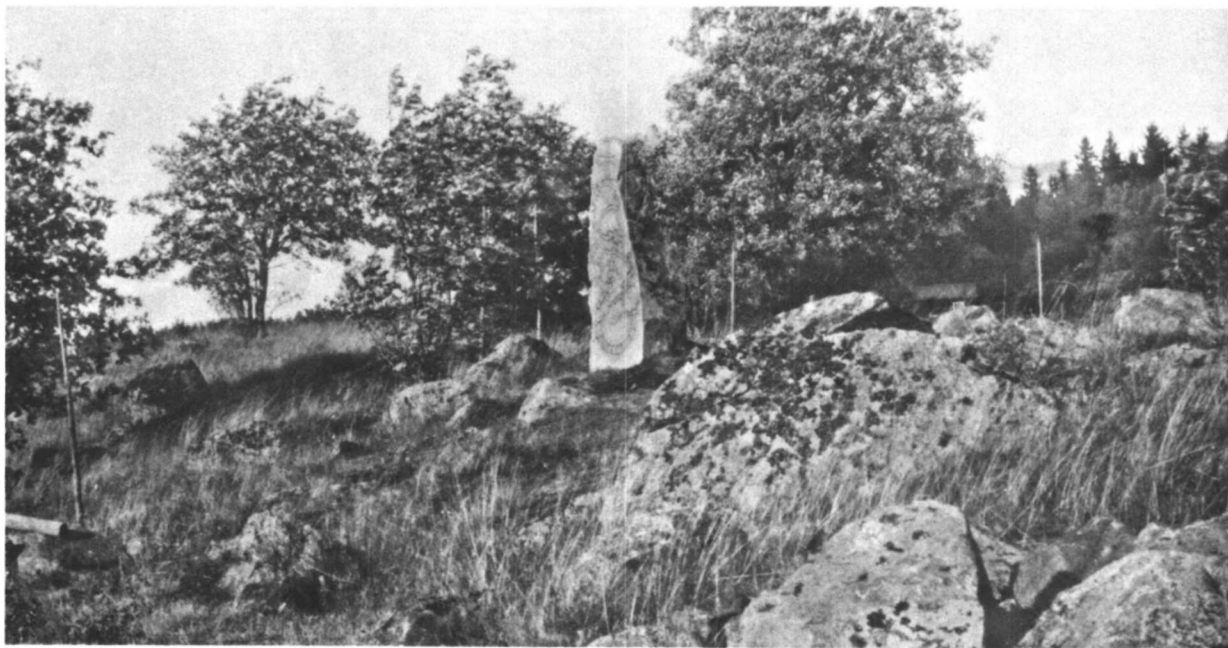
U 1138. Hållen, Runhällsbacken, Hållnäs sn.



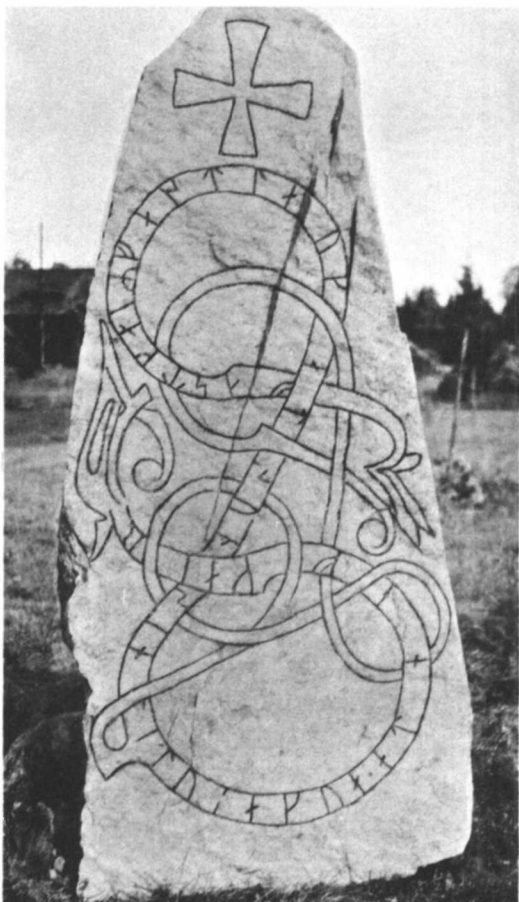
U 1139. Ängvreta, Hållnäs sn.



U 1139. Ängvreta, Hållnäs sn.



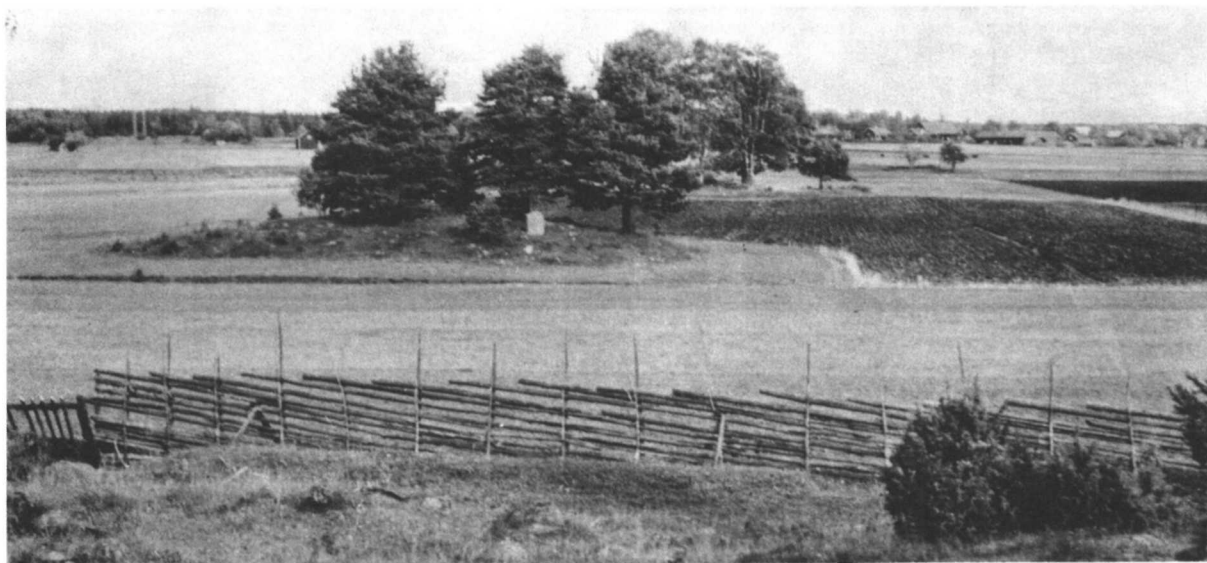
U 1140. Burunge, Vendels sn.



U 1140. Burunge, Vendels sn.



U 1142. Åbyggeby, Vendels sn.



U 1142. Åbyggeby, Vendels sn.



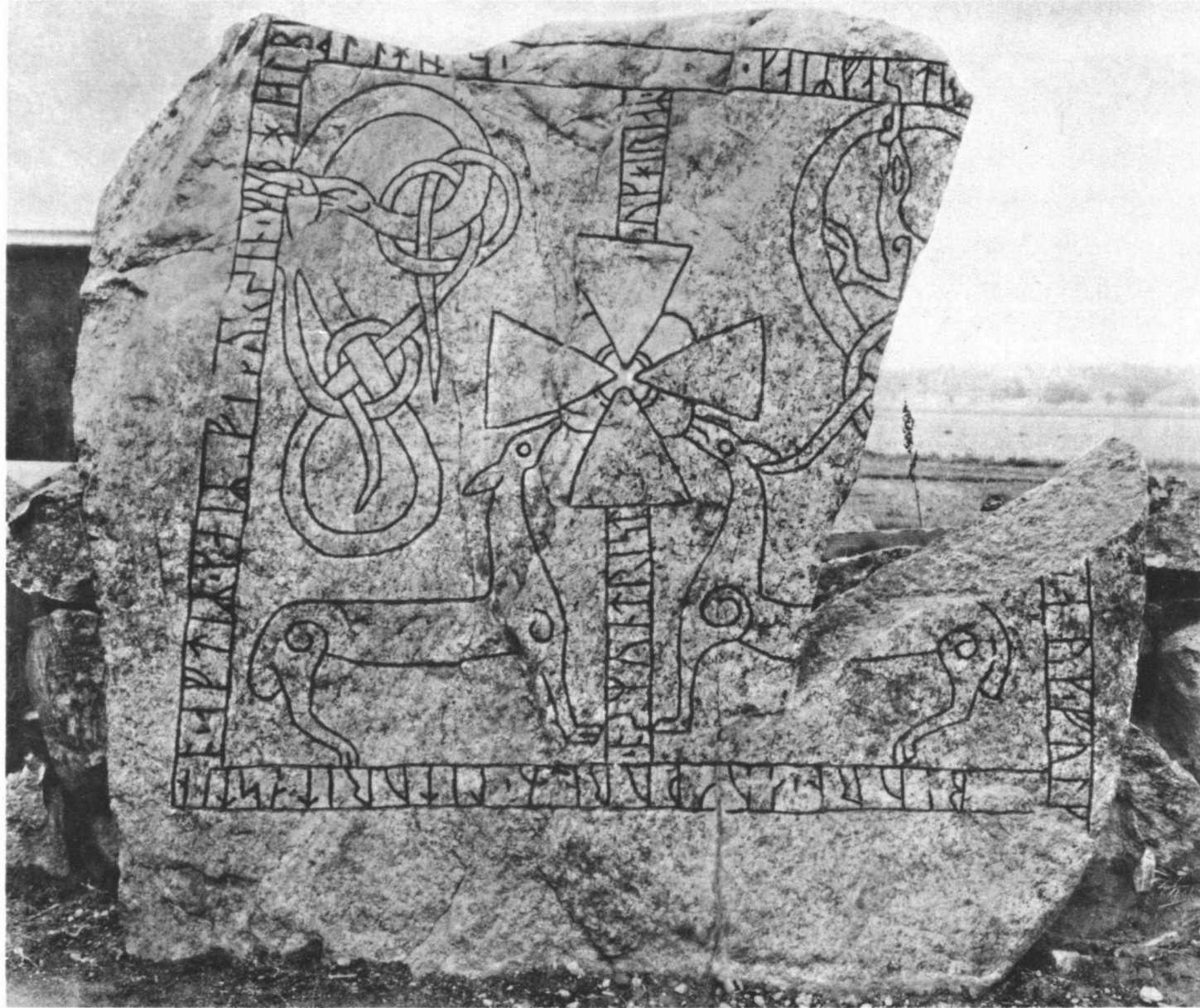
U 1145. Yttrö, Tierps sn.



U 1143. Tierps kyrka.



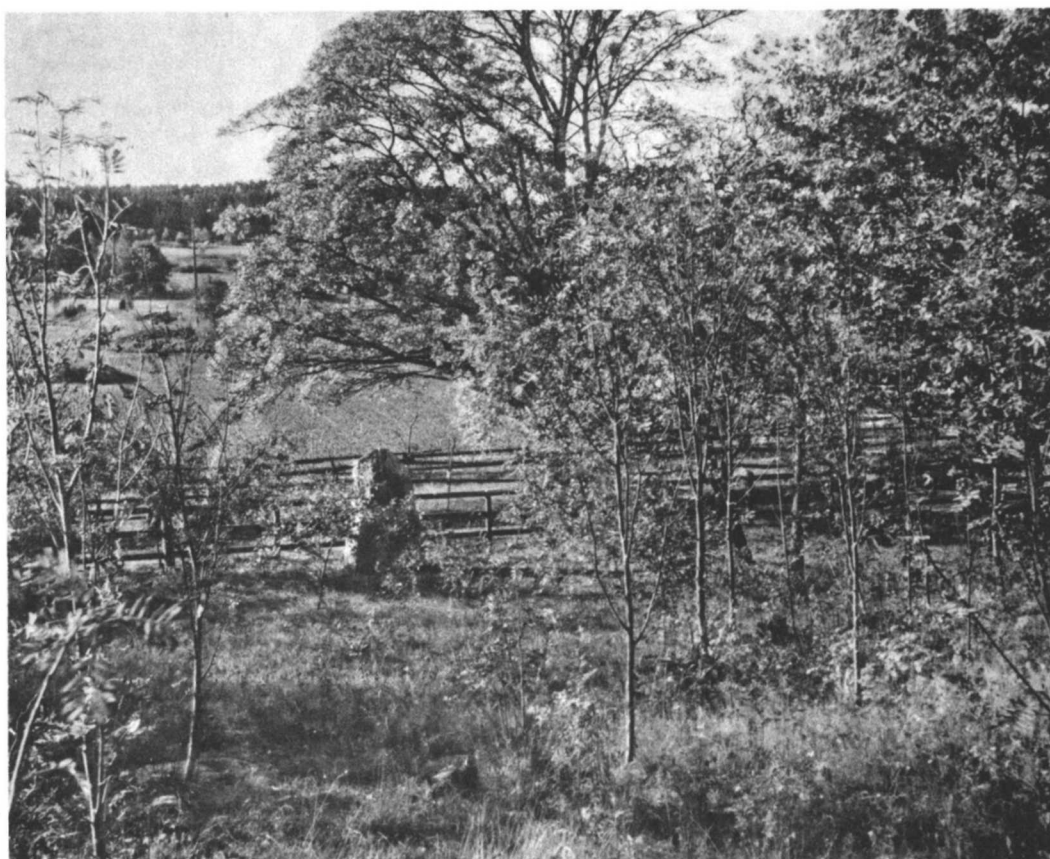
U 1145. Yttrö, Tierps sn.



U 1144. Tierps kyrka.



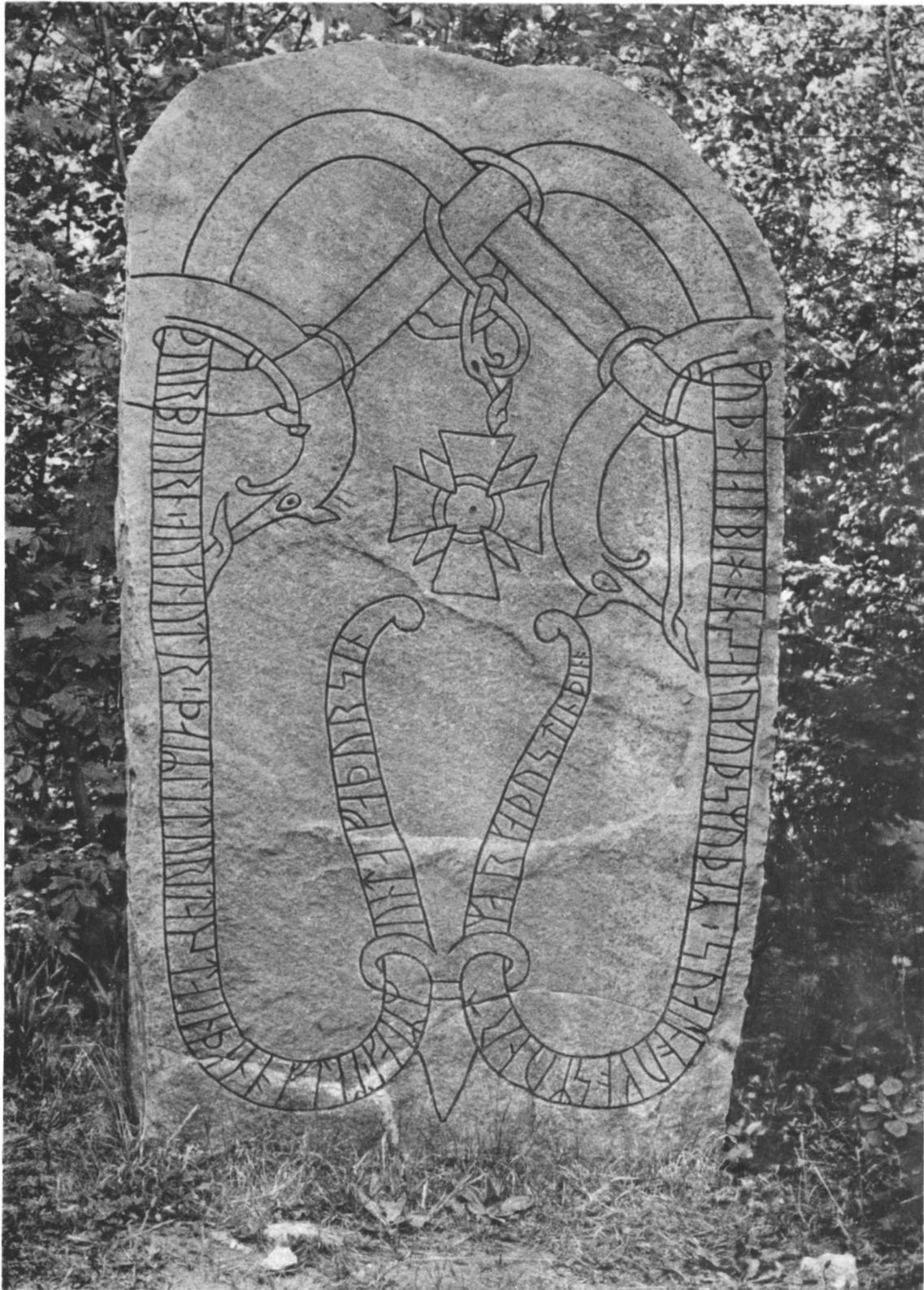
U 1146. Gillberga, Tolfta sn.



U 1146. Gillberga, Tolfta sn.



U 1149. Fleräng, Älvkarleby sn.



U 1149. Fleräng, Älvkarleby sn.



U 1150. Gårdskär, Västerboda, Älvkarleby sn.



U 1151. Brunnby, Frösthults sn.